

# Veterinarians

## How to connect a AFX-110 microchip scanner to the FEI HorseApp

You have a AFX-110 microchip scanner?

You will use the FEI HorseApp at your next Event to perform the Examination on Arrival?

Below you will find the step-by-step procedure to connect your scanner to the FEI HorseApp

**Step 1:** Turn on the scanner and press the right-hand button to bring up the main menu:

- scroll down to the **Bluetooth** settings
- press the left-hand button
- press the right-hand button to scroll down to **Select device** -> press the left-hand button
- press the right-hand button to scroll down to **Slave** -> press the left-hand button

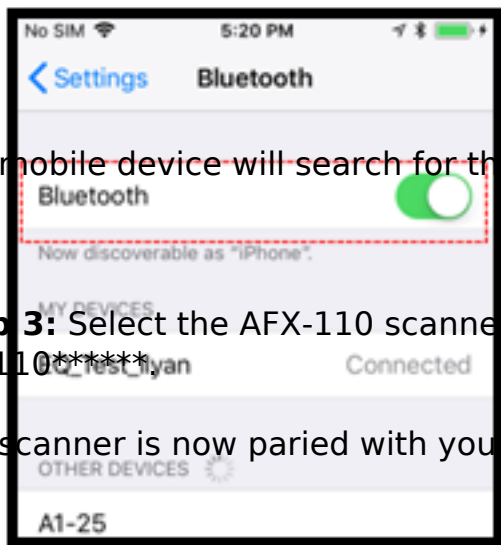
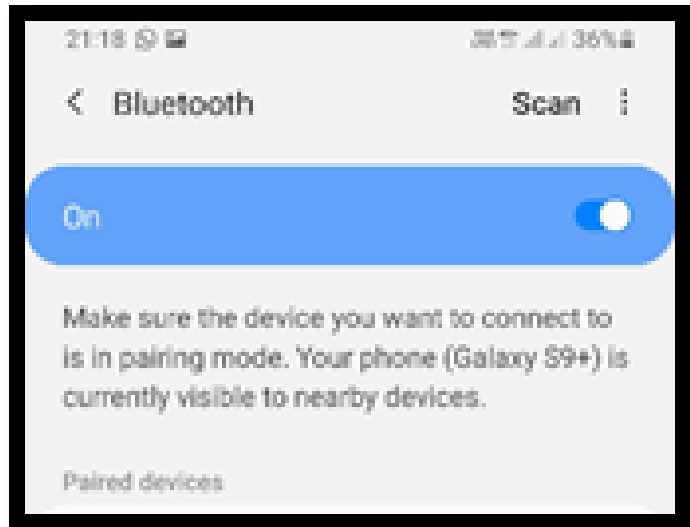
The scanner will return to the main page with the **Bluetooth** sign flashing.

**Step 2:** On your mobile device, go to **Settings** -> **Bluetooth** and make sure the Bluetooth is ON on your device

iOS devices (iPhones & iPads):

Android devices:

## Veterinarians



The mobile device will search for the microchip reader.

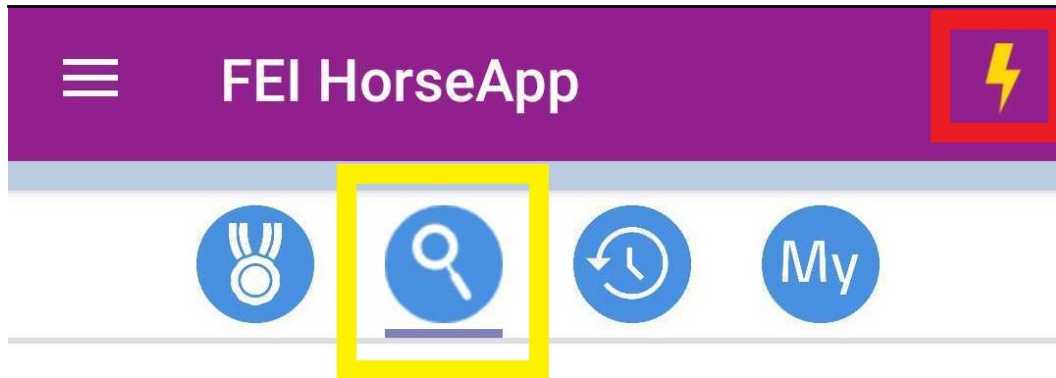
**Step 3:** Select the AFX-110 scanner that appears in the list under the name AFX110\*\*\*\*\*.

The scanner is now paired with your device.




**Step 4:** Open the [FEI HorseApp](#) and login with your FEI credentials. Choose that you wish to **act as a Veterinarian**.

Click on **Not Connected** to connect the AFX-110 scanner to the FEI HorseApp.

# Veterinarians



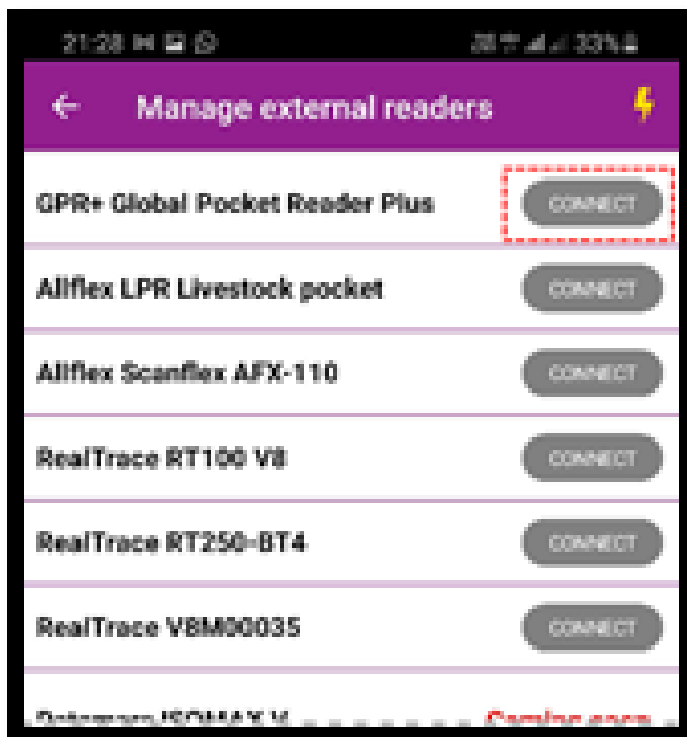
## Horse Search

-  **Advanced search**  
Search for a horse by name or FEI ID >
-  **Scan barcode**  
Scan a FEI document barcode >
-  **Scan microchip**  
Scan with an external reader > 

Not connected

# Veterinarians

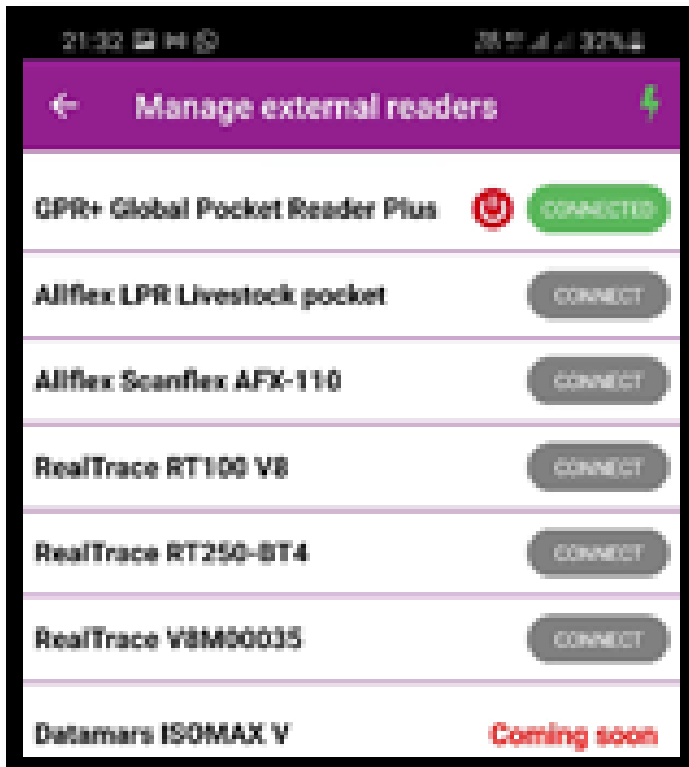
**Step 5:** Locate the GPR+ scanner in the list and click on Connect.



Please note: the first time you connect your GPR+ scanner it might take several minutes or attempts to connect it

**Step 6:** Once the GPR+ scanner is connected to the FEI HorseApp, the button will turn **green** and the **thunderbolt** logo will also show that you are correctly connected.

# Veterinarians

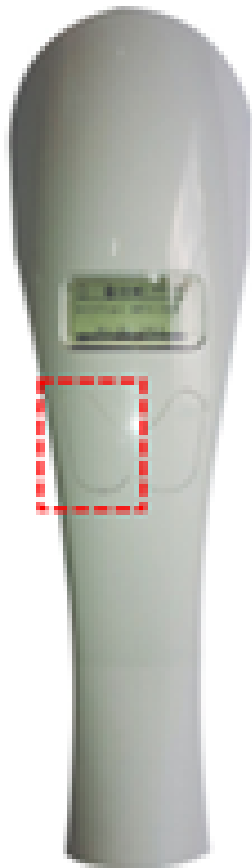


You can use this screen to disconnect your microchip scanner if you wish.

**Step 7:** You can now proceed with scanning a Horse. The scanner will work whenever it is **connected**.

To scan, search for the horse microchip and press the left-hand button on the AFX-110 scanner. The horse' profile will open on the FEI HorseApp accordingly.

# Veterinarians

A screenshot of the FEI HorseApp interface. The top bar is purple with the time 20:30 and signal/battery icons. Below is a header 'Veterinary Examination' with a back arrow. The main content is divided into sections: 'HORSE DETAILS' with a green 'Entries Unlocked' button, and 'ACTIONS'. Under 'HORSE DETAILS', the horse's name is 'SME', ID is '981098106996605', and other details like 'GBR04916', 'Gelding', '01/01/1982 (39y)', 'Owner: test (GBR)', and 'Microchip: 981098106996605' are listed. The 'ACTIONS' section has a 'HORSE TEMPERATURE' screen with two temperature unit options (°C and °F) and a numeric keypad showing '37.7'. At the bottom are 'Cancel' and 'Submit' buttons.

[Click here to see how to use the FEI HorseApp during the Examination on Arrival](#)

Unique solution ID: #1252  
Author:  
Last update: 2022-06-22 10:23