

Registration and Horse Documents

How to provide the FEI with scans of my horse's document using the FEI HorseApp

You are an Athlete and your National Federation has created a FEI profile for your Horse and you need to upload the Horse's document to the FEI Database?

Step 1: Download the FEI HorseApp on your smartphone or tablet. The application is available on both iOS and Android Devices.

[Click here for all information related to the FEI HorseApp including the links to download the App.](#)

Step 2: To see how to use the FEI HorseApp to upload horse documents, please consult the step-by-step guidelines below or watch the following video:

To note: click on 'Watch on YouTube' to open the video in full screen.

Click [here](#) to see which pages of the horse's identification document need to be uploaded on the FEI Database.

Step-by-step process to upload photos of Horse documents on the FEI HorseApp:

Step 1: Log in to the FEI HorseApp with your FEI ID number and password.

[Click here](#) to see how to log in to the FEI HorseApp.

Step 2: Navigate to the search section to find the Horse. You can search for a Horse by its FEI ID number or name.

Registration and Horse Documents

Step 3: You will land on the Horse's page. Click on **Horse Documents**.

Registration and Horse Documents

Step 3: You will be able to see which document is require to have pages uploaded.

Registration and Horse Documents

Step 4: Select the page you wish to upload.

Step 5: Make sure the page is not cropped and that all information is visible and in a good quality.

Registration and Horse Documents



Page 6 / 17

(c) 2024 Fédération Equestre Internationale <usersupport@fei.org> | 2024-04-24 17:20

URL: https://howto.fei.org/content/28/75/en/how-to-provide-the-fei-with-scans-of-my-horse_s-document-using-the-fei-horseapp.html

Registration and Horse Documents

Step 6: Confirm the page of the Horse's document you are uploading.

Registration and Horse Documents

Registration and Horse Documents

Step 7: You will see the status **Uploaded** for the page you have uploaded.

Once the document is verified and validated by the FEI, you will see the status **Validated**.

Registration and Horse Documents

Registration and Horse Documents

You can open the page only of the document(s) you have uploaded. If the page has been uploaded by another person, you will not be able to see the horse document.

Step 8: If a document is refused by the FEI, click on **Refused** to see the reason why the page has been refused.

Registration and Horse Documents

15:24


5G

<

🏠


Horse Documents

⚡



ESPRESSO KAZAAR


106GQ14



Expand ▾

DOCUMENTS

3 / 4




Description and Diagram Page

08/11/2018 - 14:46:44

Validated

>




Name Page

19/12/2022 - 14:21:28

Validated

>




Name Page Nat. Doc

Press to add file

Optional

>




Owner Page

08/11/2018 - 14:45:39

Validated

>




Pedigree Page

Press to view file

Refused

>



Add a page

Press to add file

Optional

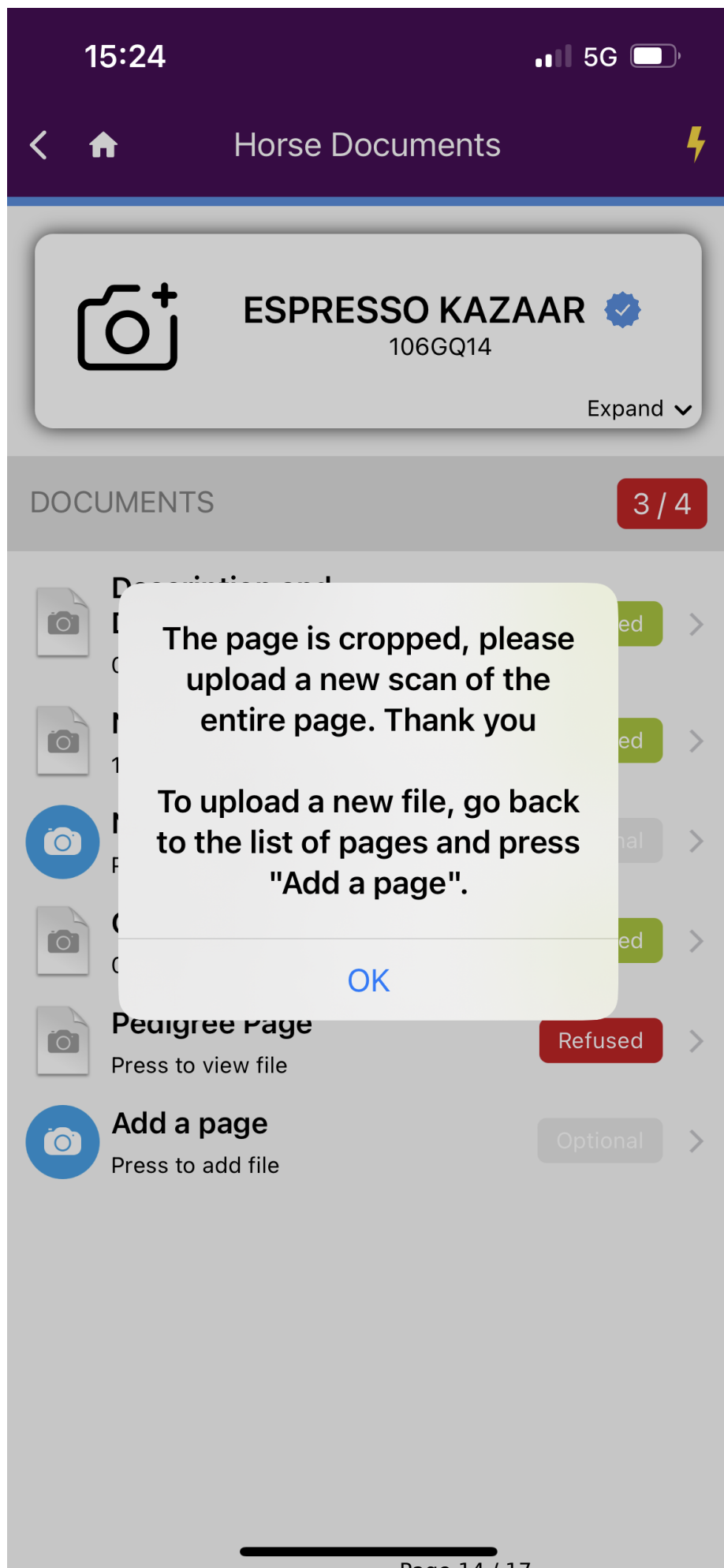
>

Page 12 / 17

Registration and Horse Documents

Step 9: A pop-up window will open with the rejection comment.

Registration and Horse Documents



Registration and Horse Documents

Step 10: When all the required pages are uploaded and validated, this will be indicated in the top right corner in **green**.

Registration and Horse Documents

Registration and Horse Documents

Please note:

- Only Athletes and National Federation members can upload Horse documents on the FEI HorseApp.
- Your National Federation can still make your entry on the FEI Entry System for a future FEI Event if the documents are not yet validated by the FEI.

If you have any questions or require any assistance, please contact usersupport@fei.org

Unique solution ID: #1074

Author:

Last update: 2024-01-30 11:43